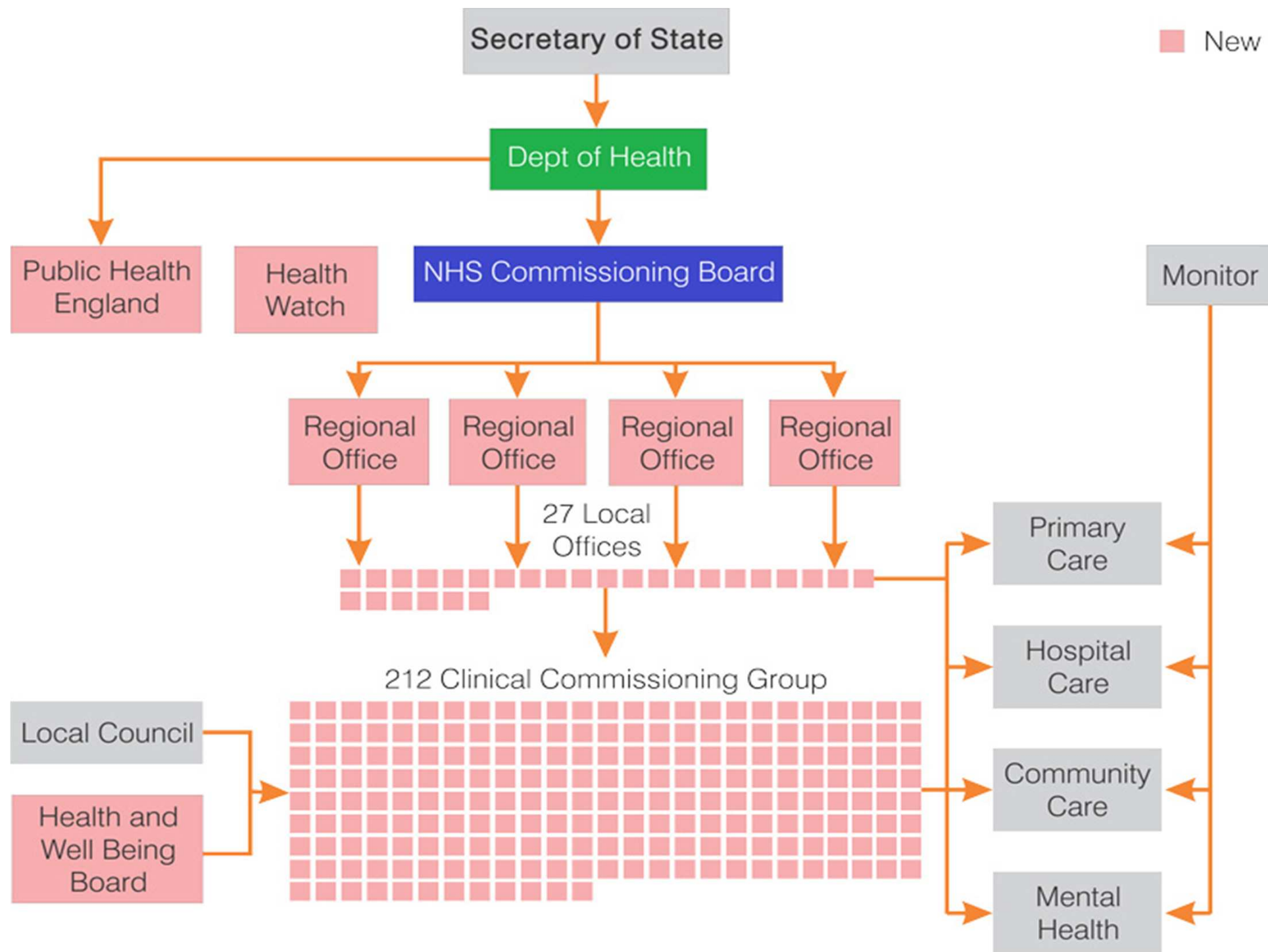


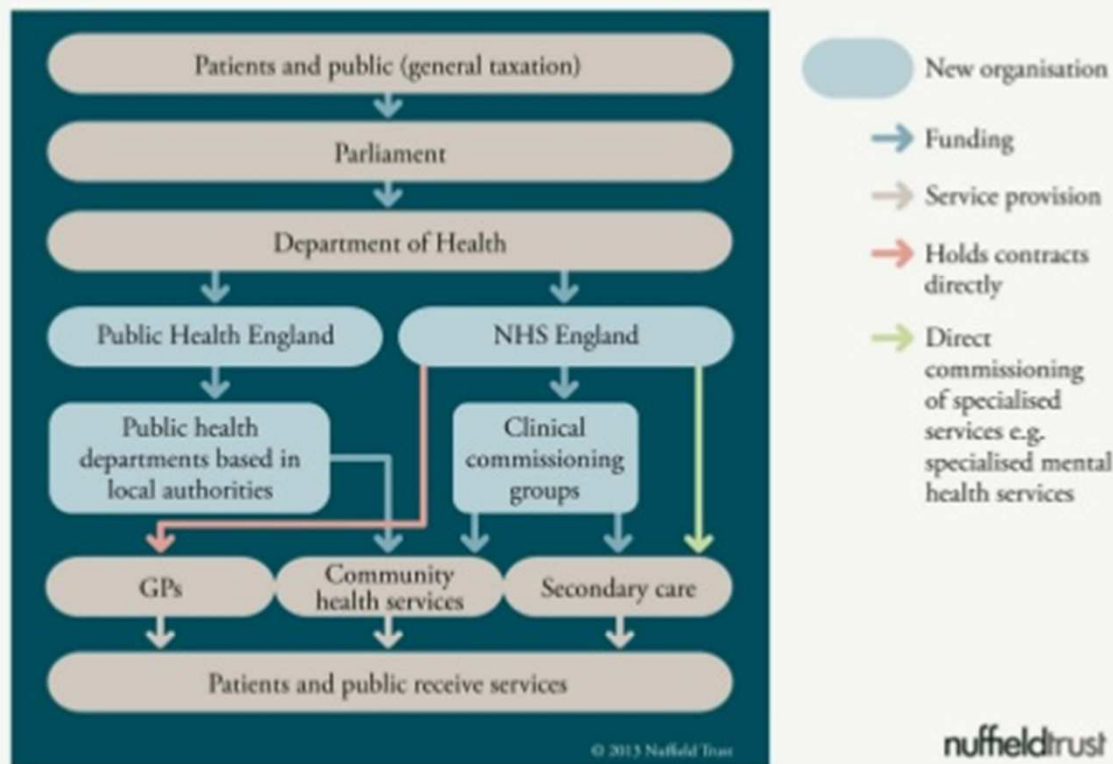
# The New NHS Commissioning Landscape

**Dr. Ian Orpen**  
**17<sup>th</sup> May 2013**

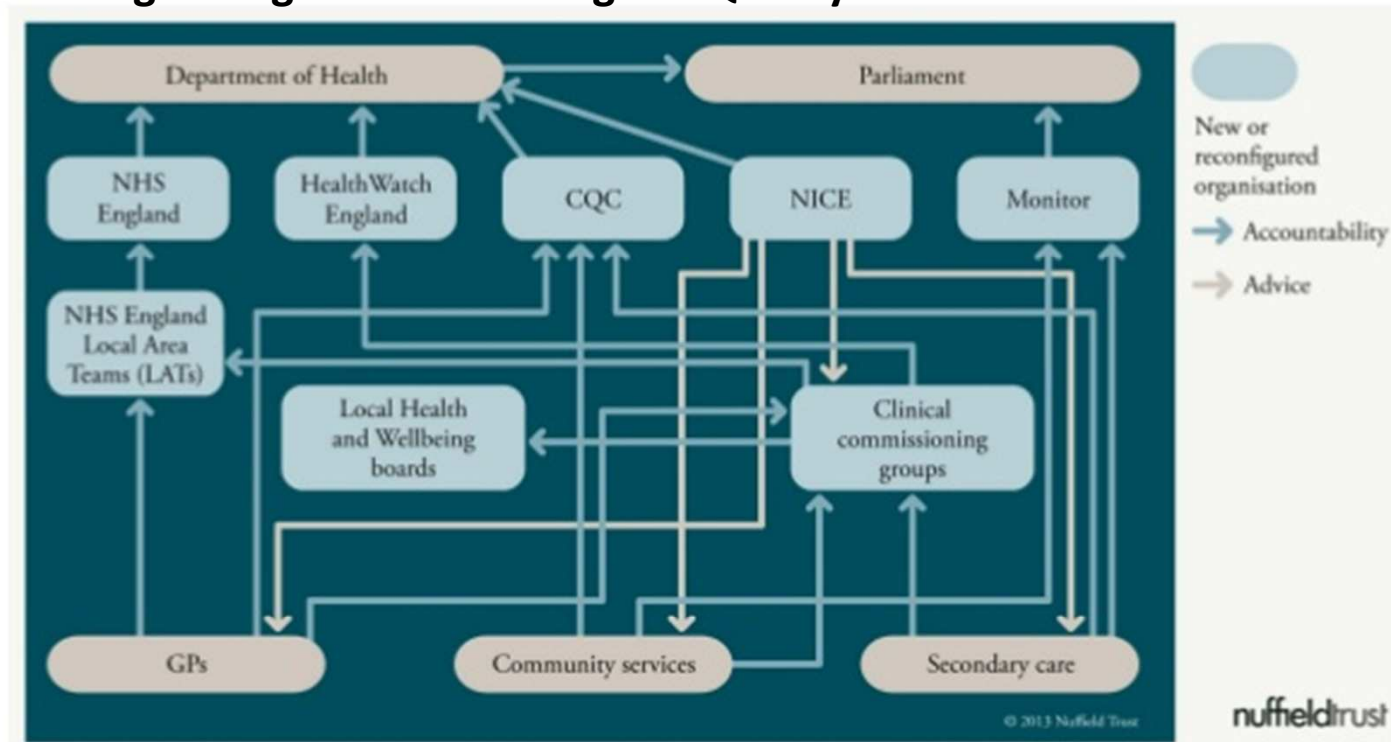
*Healthier. Stronger. Together*



## New Funding Arrangements



## Regulating and Monitoring the Quality of Services



# Role of NHS England

- To allocate resources to CCGs
  - and support them to commission services on behalf of their patients
- To deliver improved outcomes for patients
- To directly commission
  - primary care
  - military, offender health and
  - specialised services
- To plan for civil emergencies,
- To provide system oversight and leadership

# NHS England Outcomes

- Preventing people from dying prematurely
- Enhancing the quality of life for people with long term conditions
- Helping people recover from episodes of ill-health or injury
- Ensuring people have a positive experience of care
- Caring for people in a safe environment and protecting them from avoidable harm

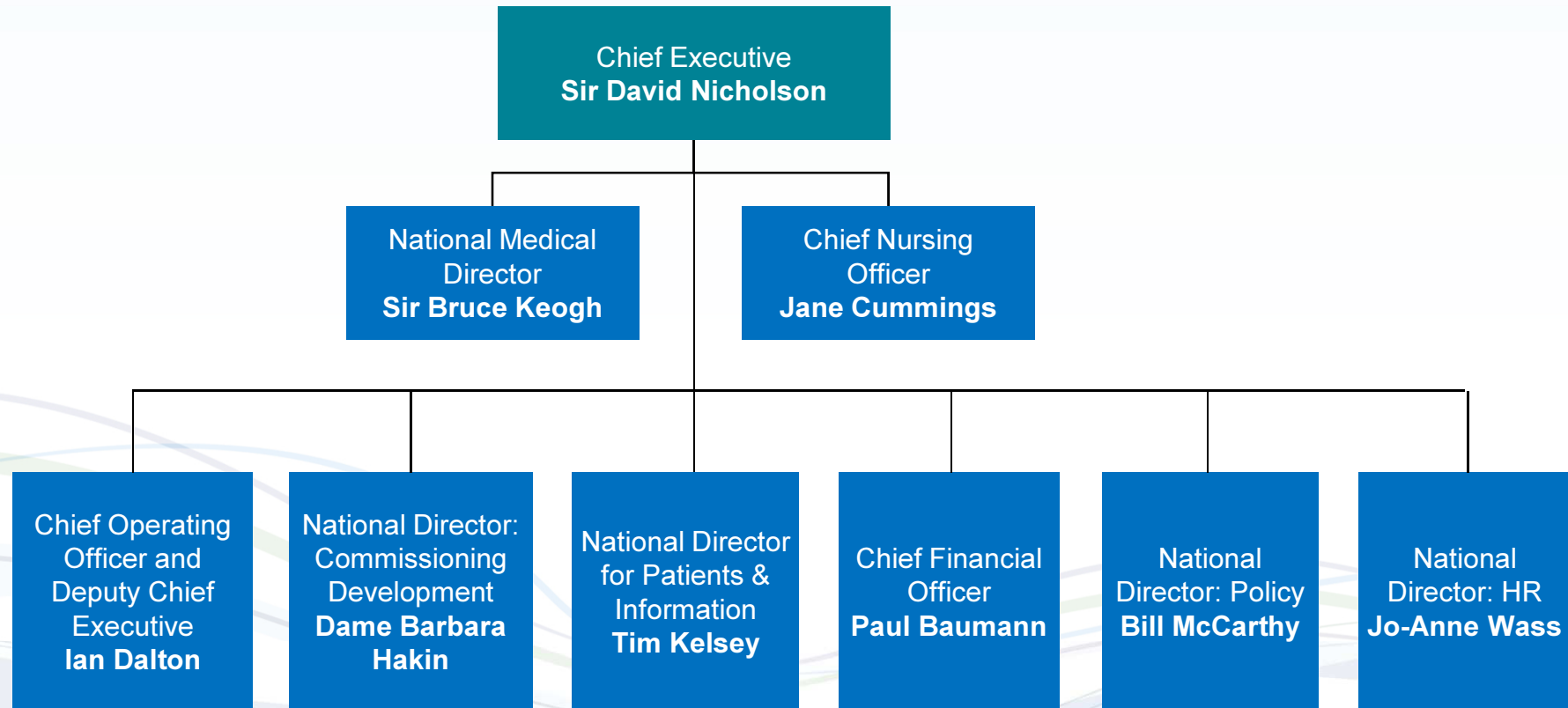


# NHS England - Facts and Figures

- Approximately 4000 employees, working across 8 Directorates
- Majority of functions carried out at a local level
  - through 4 regional teams (750) and
  - 27 Area teams (2700)
- 720 people at national support centre in Leeds
- 3200 staff employed across the country
- The 4 Regions are:
  - North of England
  - Midlands and East of England
  - London and
  - the South of England

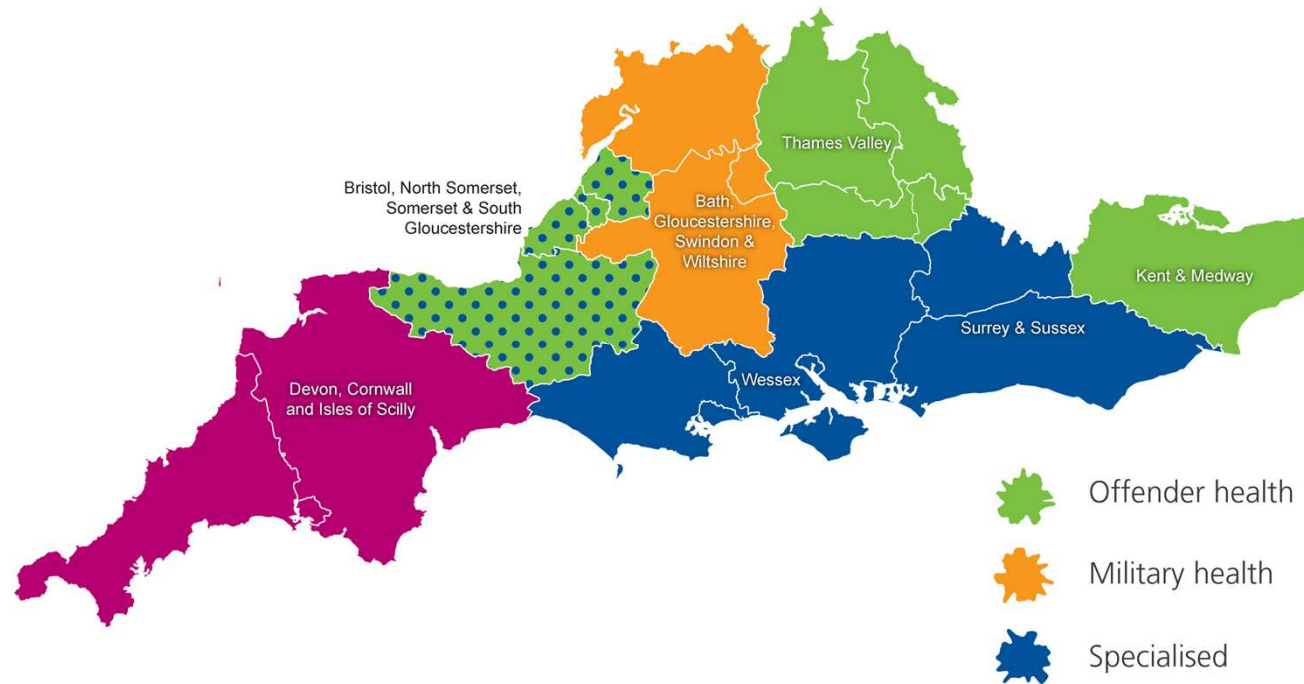


# NHS England Structure





# NHS England – South: Additional responsibilities



-  Offender health
-  Military health
-  Specialised



# BGSW



## 1.5 million population

2586 square miles

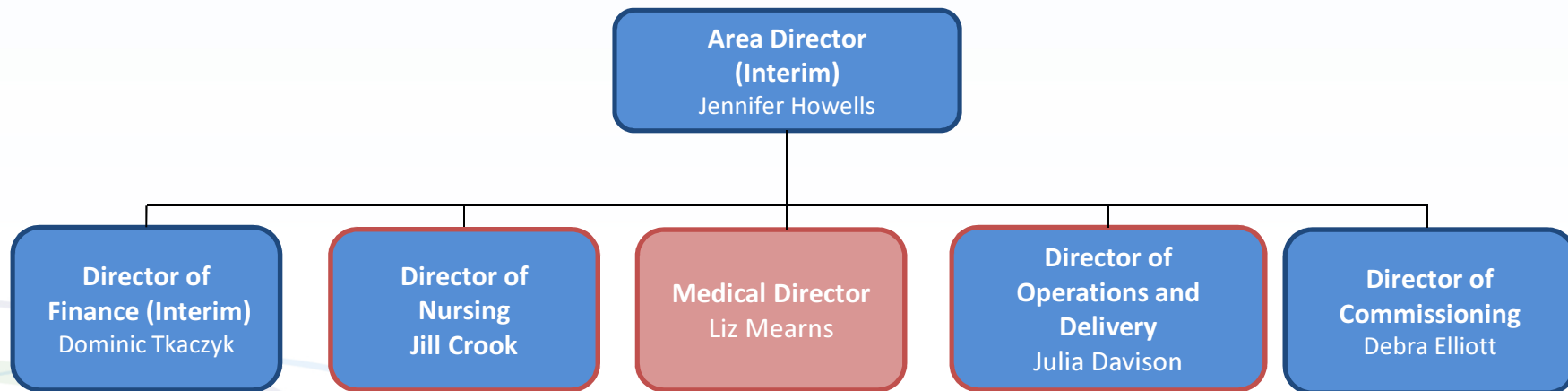
Budget £405m (BGSW)  
£255m (other ATs)  
£1609m (CCGs)

4 Clinical Commissioning Groups  
4 Local Authorities plus district councils  
4 Health and Wellbeing Boards  
3 Local Resilience Forums

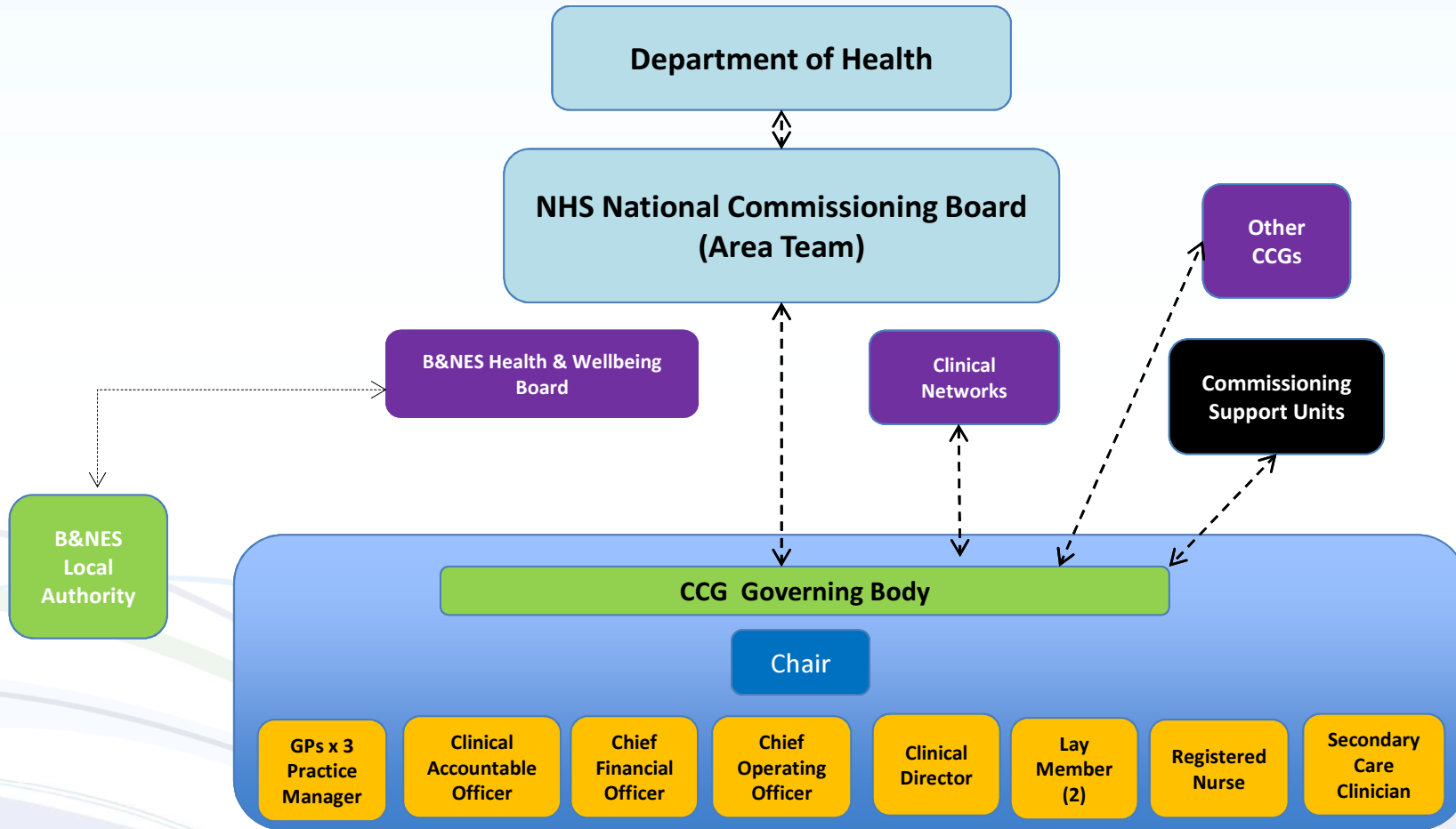
206 GP Contracts  
238 Dental Contracts  
267 Pharmacy Contracts  
181 Optometry Contracts  
2 Prisons 1xCat B and 1xCat C  
2 SARC  
4 Acute Providers & 1 Spec. Provider  
4 Community Care Providers  
2 Mental Health Providers



# BGSW Area Team

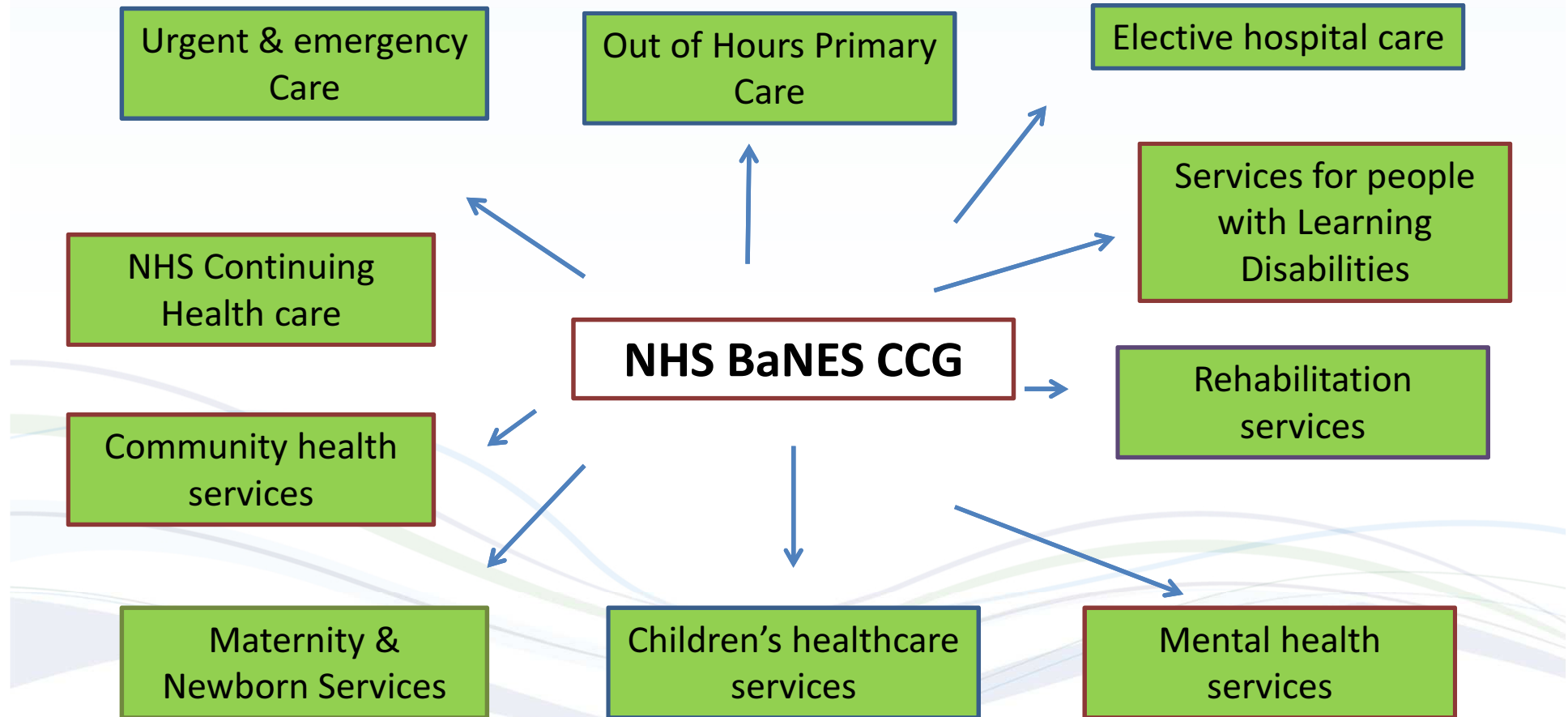


# The Local Structure



Bath & North East Somerset  
Clinical Commissioning Group

# What are CCGs responsible for?



**Thank you**



***Healthier, Stronger, Together***